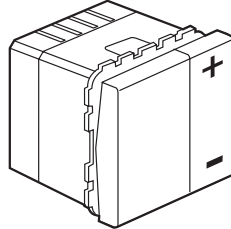


Mosaic™ Dimmer switch, 600 W

Cat. No(s): 784 05



1. GENERAL CHARACTERISTICS

Dimmer switch for controlling lighting devices. Dimmer switch with level memory for switching on with the same light intensity used before switching off or mains cut-off.

Cat. No.	240 V		100 V		Use	
	Max.	Min.	Max.	Min.		
784 05	600 W	40 W	300 W	20 W		Incandescent lamp
	600 W	40 W	300 W	20 W		230 V halogen lamps
	600 VA	40 VA	300 VA	20 VA		Halogen lamp with ferromagnetic transformer

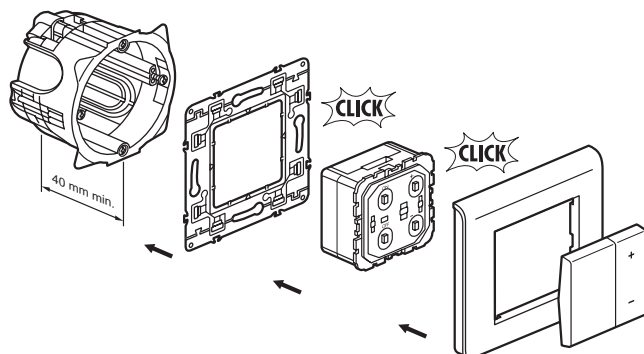
Don't work with: **Halogen lamp with electronic transformer**

2. RANGE

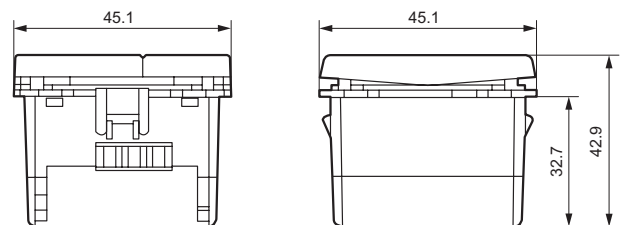
	Designation	Cat. No.	Modules	Connection method	Weight (g)
	Remote-control dimmer switch 600 W	784 05	2 modules	Cage-type	56

3. PREPARATION

The mechanisms can be flush-mounted or surface-mounted. Modular mechanisms using adapter Cat. No. 802 99 (2 modules). The mechanisms are mounted on thin walls using adapter Cat. No. 802 91 (2 modules).



4. OVERALL DIMENSIONS

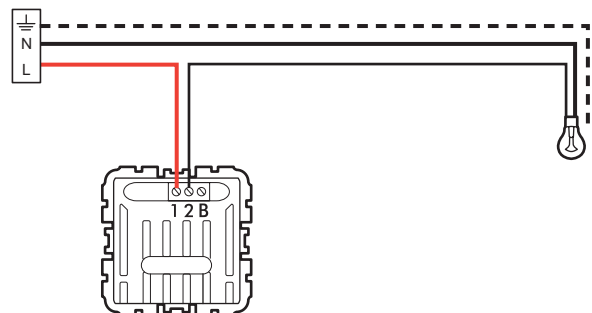


5. CONNECTION

Number of terminals	3
Terminal type	Cage-type connector
Terminal capacities	2 x 1.5 mm ² or 1 x 2.5 mm ²
Tool	3.5 mm flat-blade screwdriver or Philips No. 1 or posidrive No. 1 or mixed size 0

Wiring:

5.1 Connection of one lighting point (factory configuration)



Dimmer switch, 600 W

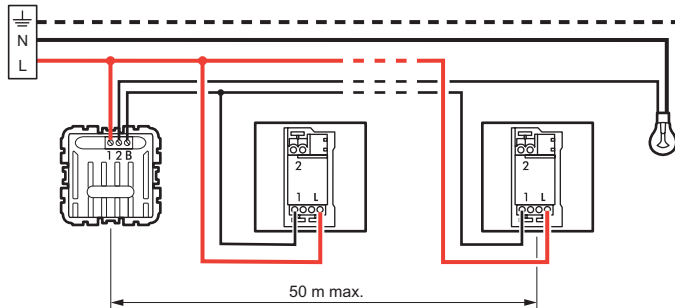
5. CONNECTION (cont'd)

5.2 Connection of several lighting points

By combining NO pushbutton (two-way switch function with light dimming from all control points).

Use of the pushbutton connected to the dimmer switch:

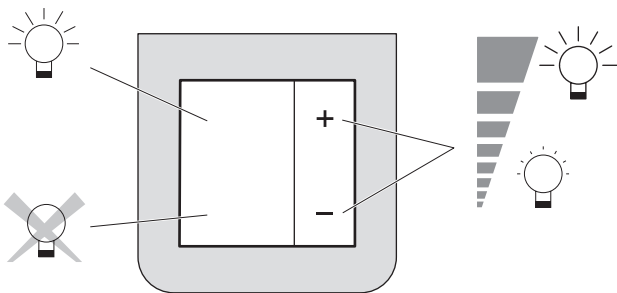
- a short press to switch on/switch off (< 2 s)
- a long press for the dimming function (> 2 s).



Important :

The dimmer switch includes a «remote control switch» function that is incompatible with an installation that already contains remote control switches and pushbuttons.

6. OPERATION



7. TECHNICAL CHARACTERISTICS

7.1 Mechanical characteristics

Impact tests: IK 02

Penetration by solid bodies/liquid: IP 20

7.2 Material characteristics

Base + cover: Polycarbonate

Rockers: ABS (RAL 9003)

7.3 Electrical characteristics

Self-extinguishing: 650°C/30 s

Tension : 100/240 V

Voltage: 2.5 A

Frequency: 50/60 Hz

7.4 Climatic characteristics

Storage temperatures: - 10°C to + 60°C

Operating temperatures: 0°C to + 35°C

8. CLEANING

Surface cleaning with a cloth.

Do not use: acetone, tar remover, trichloroethylene

8.1 Resistance to cleaning agents

Resistance to the following agents : Hexane (EN 60669-1), Methylated spirits, Soapy water, Diluted ammonia, Diluted pure bleach 10%, Glass cleaning substance, Pre-impregnated wipes.

8.2 Resistance to hospital-type cleaning agents

Resistance to the following agents: Anios, Surfanios, Bactylsine, Diluted hydrogen peroxide (35%).

Caution: A preliminary test should be carried out if other specific cleaning products are to be used.

9. CONFORMITY - APPROVALS

Approvals in process: NF - BBJ - VDE - GOST