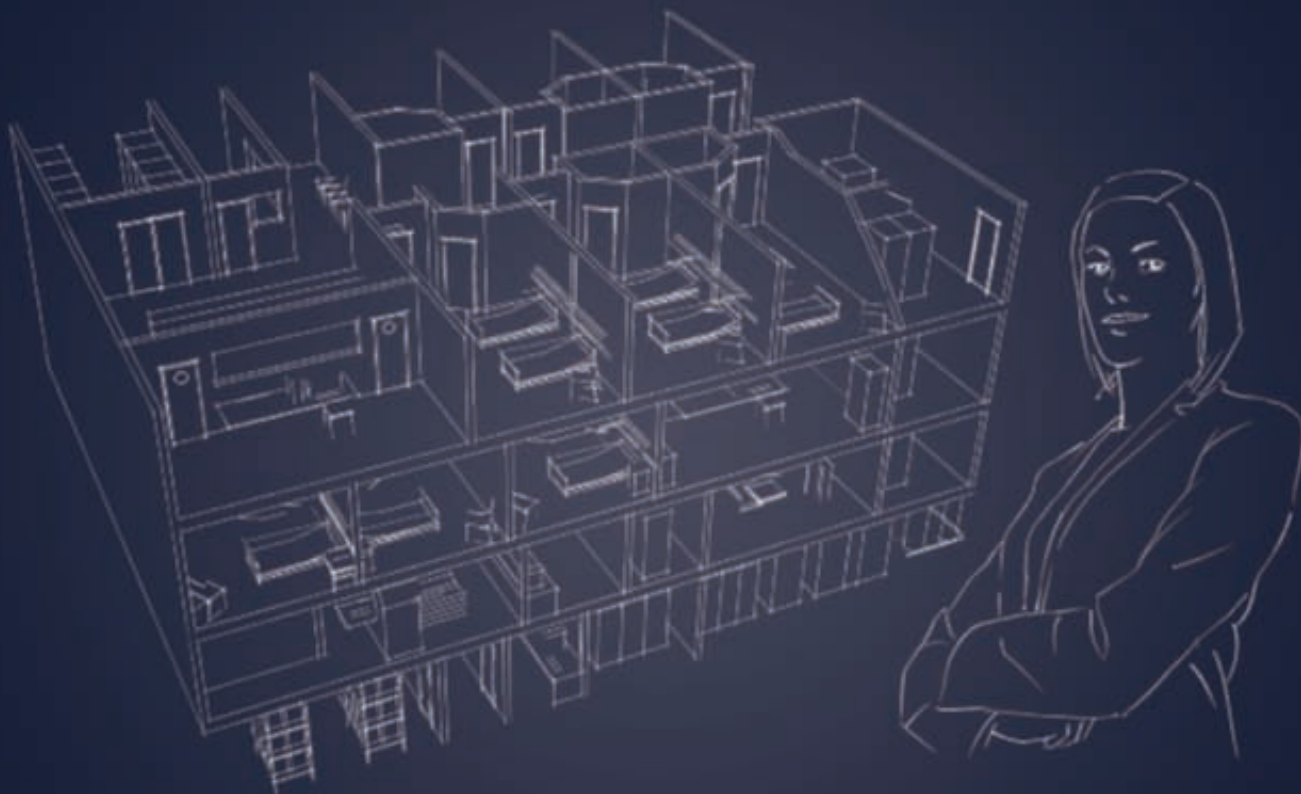


# Healthcare facilities

## Integrated solutions



## EFFICIENT CARE IN HEALTHCARE FACILITIES

In view of the extensive requirements of healthcare infrastructures (the trend for medical centres to become centralised in developed countries and the vast needs of emerging countries), the Legrand Group applies its expertise to providing responses to the needs of today and preparing the solutions of tomorrow in collaboration with operators and engineering consultancies.



### AN INTERNATIONALLY RECOGNISED GROUP

Legrand is the global specialist in electrical and digital building infrastructures.

All over the world, it offers a complete range of systems to create electrical installations and information networks to suit all types of project.

Legrand offers a total of 170,000 catalogue numbers and owns more than 4800 patents.

**73** subsidiaries and offices,  
in almost **180** countries

**33 000** employees  
worldwide

**€ 4.25 billion**  
net sales in 2011



## LEGRAND AND SUSTAINABLE DEVELOPMENT

For many years, Legrand has been committed to a progress initiative with its customers and partners in order to ensure the profitable, durable, and responsible growth of its activities.

This approach is one way in which the Group is responding to the environmental, economic and social issues of today and tomorrow.

### 1. A global approach for sustainable development

The sustainable development policy at Legrand covers three areas : social responsibility, the environment, and governance. For further information, visit: [www.legrand.com](http://www.legrand.com)

### 2. Reducing the impact of sites

Since 1996, Legrand has integrated environmental protection and management into the operation of its manufacturing sites.

### 3. Controlling the use of chemicals

The Legrand Group always seeks technical solutions to find substitutes for hazardous substances used in the manufacture of its products.

### 4. Eco-designed products

Because products have generated a global impact on the environment throughout their life cycle, Legrand implements eco-design.



### Corporate Social Responsibility

Legrand is committed to a global policy of transparency, illustrated by voluntary initiatives such as signing up to the Global Compact and responding to the demanding social and environmental criteria of the FTSE4Good and DJSI\* index series.

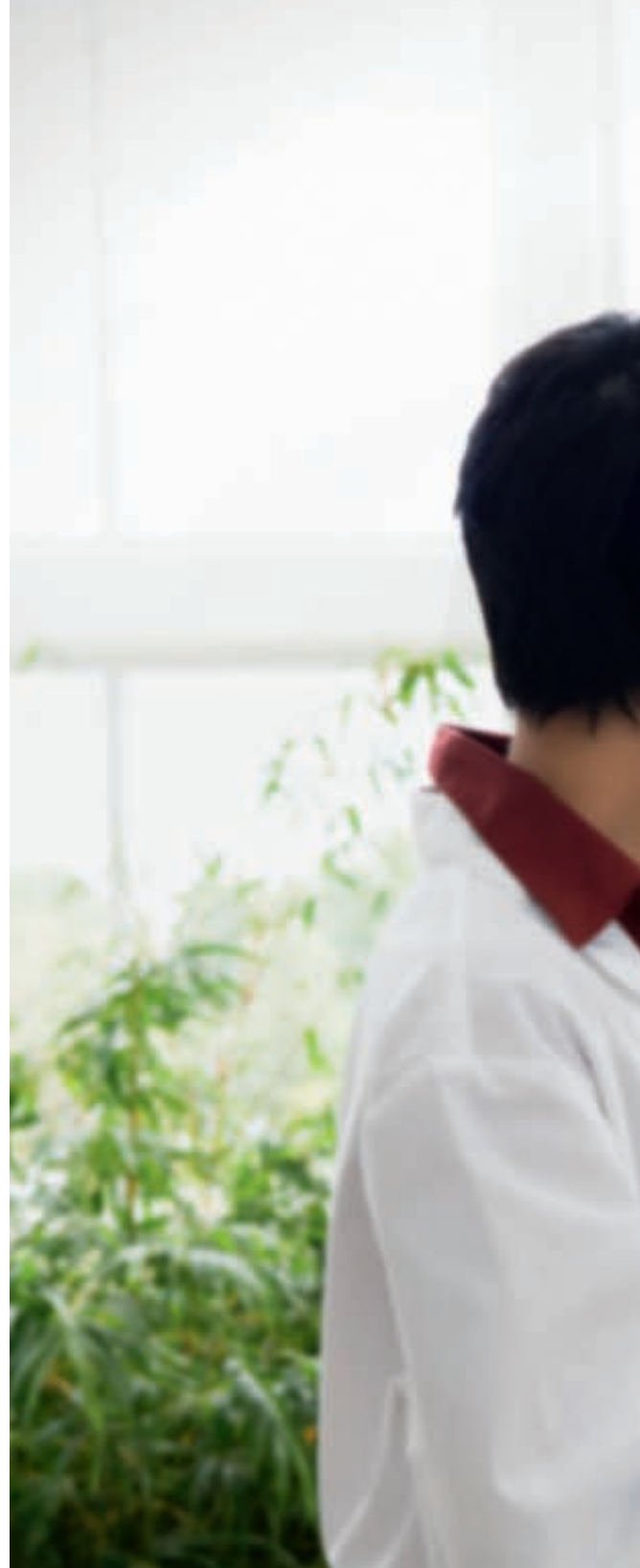
\* Based on an evaluation in 2011, subject to annual re-evaluation.

# LEGRAND

## A SINGLE POINT OF CONTACT TO CO-ORDINATE EACH PROJECT

Legrand has a network of partners and dedicated departments to guide you through every stage of your project.

A global solution, alongside a strong brand, is a guarantee of long-term security for highperformance operation of healthcare facilities.



### ENHANCED WELL-BEING

**The infrastructure must provide a sufficient level of comfort and convenience to improve the daily life of inpatients.**

Patient comfort is enhanced by a secure environment, the availability of nurses, and accessibility for his or her visitors.

In addition to comfort, care must be maintained at high levels of efficiency and performance by simplifying the work of the care staff and helping them to be more responsive in emergencies.

Legrand offers an innovative solution to adapt the electrical system for the efficient organisation of medical services around the wellbeing of inpatients.

### THE SAFETY GUARANTEE

**The concept of safety must be taken into account right from the building's design stage, for a drastic reduction in the risks of failure.**

Making the right choices is therefore essential; even vital! This approach helps to limit the risks of nosocomial diseases, to set up security systems to protect property, persons, and data, etc.

With systems **designed to a more stringent specification than the standard**, Legrand has highperformance, reliable solutions.





## MANAGEMENT OF ENERGY AND COSTS

**Striving for a situation where energy consumed is energy used towards continuous and efficient care.**

Legrand solutions work towards reducing consumption and improving the quality of electrical systems, thereby reducing the energy bill.

All our solutions incorporate a high level of maintainability right from the design stage, and help to reduce costs while limiting the need for servicing during the operating period.

## HIGH-PERFORMANCE MAINTAINABILITY

**Enabling the operator to reduce servicing costs and achieve return on investment targets.**

The Legrand Group imposes strong quality requirements right from the design of its solutions, and its innovation priorities include the simplification of maintenance operations.

Multiple-application products, worldwide availability of systems, and innovative and high-performance applications strengthen the brand's ability to respond to the demanding expectations of investors and operators.



  
Comfort & convenience

  
Efficiency

  
Service continuity

  
Maintainability

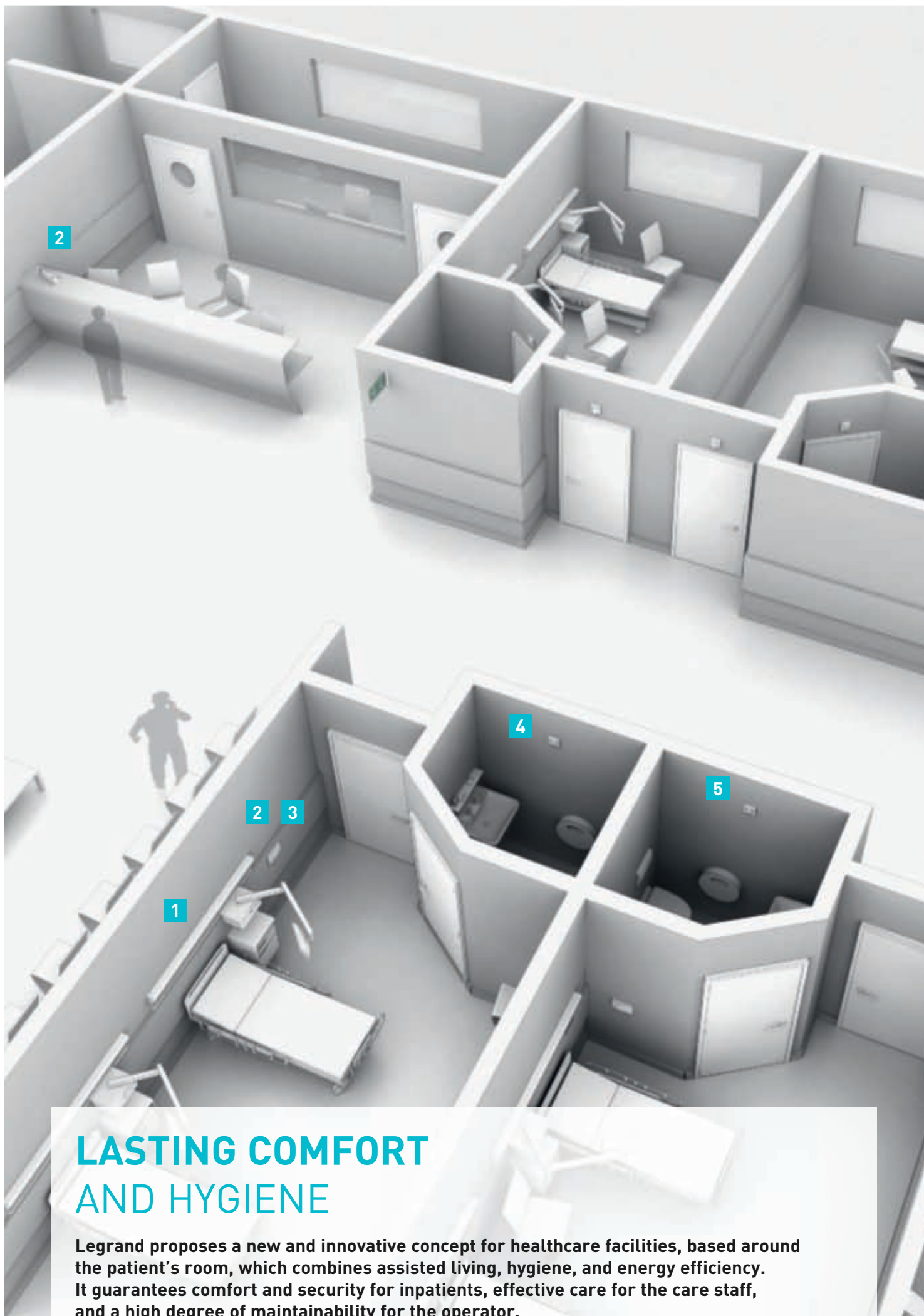
  
Savings



# THE HEALTHCARE FACILITY

## BEST PRACTICE OF LEGRAND KNOW-HOW

The Legrand Group has solutions dedicated to the specific needs of healthcare facilities: well-being of inpatients, security of persons and their data, high levels of infrastructure performance, etc.



## LASTING COMFORT AND HYGIENE

Legrand proposes a new and innovative concept for healthcare facilities, based around the patient's room, which combines assisted living, hygiene, and energy efficiency. It guarantees comfort and security for inpatients, effective care for the care staff, and a high degree of maintainability for the operator.





## 1 BEDHEAD TRUNKING UNIT

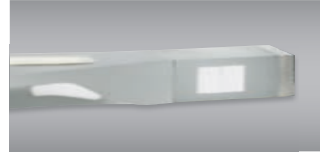
**A technological hub working for the comfort of inpatients and a convenient workplace for care staff.**

Legrand has two bedhead trunking ranges: medical socket strips and LED strips, to satisfy different types of healthcare institution: clinics, hospitals, homes, specialised residences, etc.

They combine many innovative connectors (hand-help control, nurse call device, etc.) and lighting components (care, reading, ambient lighting, night-time, etc.) to ensure comfort for the inpatient and efficiency for staff.



Medical-use wall light



LED wall lights

## 2 NURSE CALL SYSTEM

**Providing care staff with real-time information and handle calls with optimum efficiency.**

The Legrand solution can adapt to all modes by which healthcare departments are organised. It provides greater freedom of movement for greater availability and contact with inpatients. The device offers traceability of interventions.



Nursing station console



DECT



Nurse call hand-held remote control

## 3 ANTI-MICROBIAL TREATMENT

**Maximising hygiene, one of the main concerns of healthcare establishments.**

Legrand acknowledges this issue right from the design of its solutions. To reduce the risk of transmission of nosocomial infections, all components are treated using Ag+ silver ions, which eliminates 99.99% of bacteria.



Anti-microbial functions



Nurse call room unit



DLP trunking

## 4 AUTOMATIC LIGHTING FOR ASSISTED LIVING



Mosaic automatic switch

**Giving the patient more convenience and safety when moving around at night, and saving staff time.**

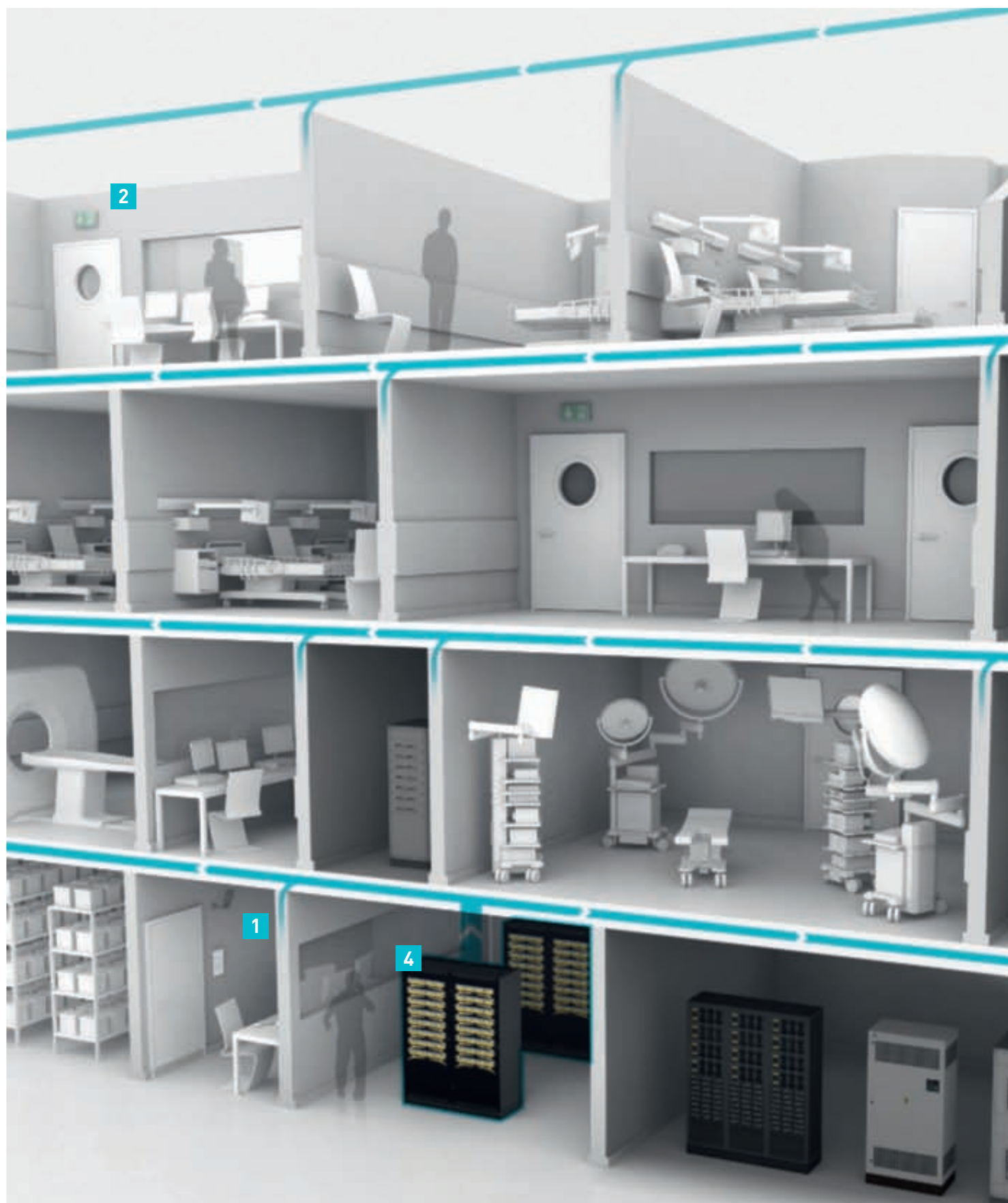
These Legrand lighting solutions help patients to find their way around the room and bathroom at night. On/off lighting is memorised by activity measurement software, and the data taken Mosaic into consideration in the diagnosis of patient health.

## 5 MOSAIC FUNCTIONS



**More than 250 functions including 40 anti-microbial ones available quickly in most countries of the world.**

The Mosaic range offers a comprehensive choice of commands and connectivity integrated in the infrastructure of healthcare facilities. With anti-microbial treatment on more than 40 functions, it satisfies cleaning requirements, making it the hygienist's best ally.



## SECURITY OF PERSONS AND THEIR DATA

Observance of the safety and security requirements for healthcare facilities is essential. Limiting the risks of incidents for persons, facilitating the preservation of data in medical files, and giving inpatients access to the multimedia universe are increasingly critical issues to which the Legrand offer can provide a response.



## 1 ACCES CONTROL AND CCTV SECURITY

**Protecting sensitive areas of the healthcare facility using safe and effective access control systems.**

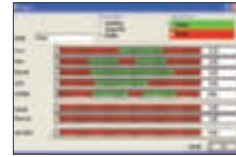
Legrand supplies an easy-to-use, low-maintenance access control system offering performance and upgradeability, that accepts up to 500 users in standalone mode and 10,000 users in centralised mode. A system of readers and cameras takes care of the security of persons, management of car parks, and monitoring of sensitive areas.



Biometric reader and badge reader



CCTV surveillance



Maintenance and supervision

## 2 EMERGENCY LIGHTING

**Standalone or addressable solutions for evacuating people quickly and safely.**

More than ever, Legrand combines safety and energy savings, with its emergency lighting solutions. These safety systems are available all over the world.

They comply with the Group's environmental commitments.

They incorporate an eco-design approach and are fully recyclable.



LED emergency lighting units



Flush-mounted emergency lighting units



LVS software

## 3 CABLE MANAGEMENT

**Legrand cable duct and wireway systems are available for all applications and are protected against fire propagation via the cables.**

As a world leader in cable management, Legrand offers complete ranges for both copper and fibre optic cables that are safe to install. These solutions combine mechanical and electrical performance characteristics. Safety is reinforced by a fire propagation prevention system.



Mosaic DLP



EZ-Path



Cablofil

## 4 LEGRAND CABLING SYSTEM<sup>2</sup>

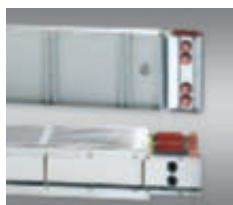


LCS<sup>2</sup> enclosure

**The Legrand commitment: a 25-year guarantee on the performance of the channel and its components.**

This structured wiring system offers copper solutions (Cat. 6a up to 500 MHz, Cat. 6 up to 250 MHz, and Cat. 5e up to 100 MHz), fibre optic solutions for backbone and inter-building connections, Wi-Fi, VDI enclosures. The LCS<sup>2</sup> range was designed to optimise the performance of data centers.

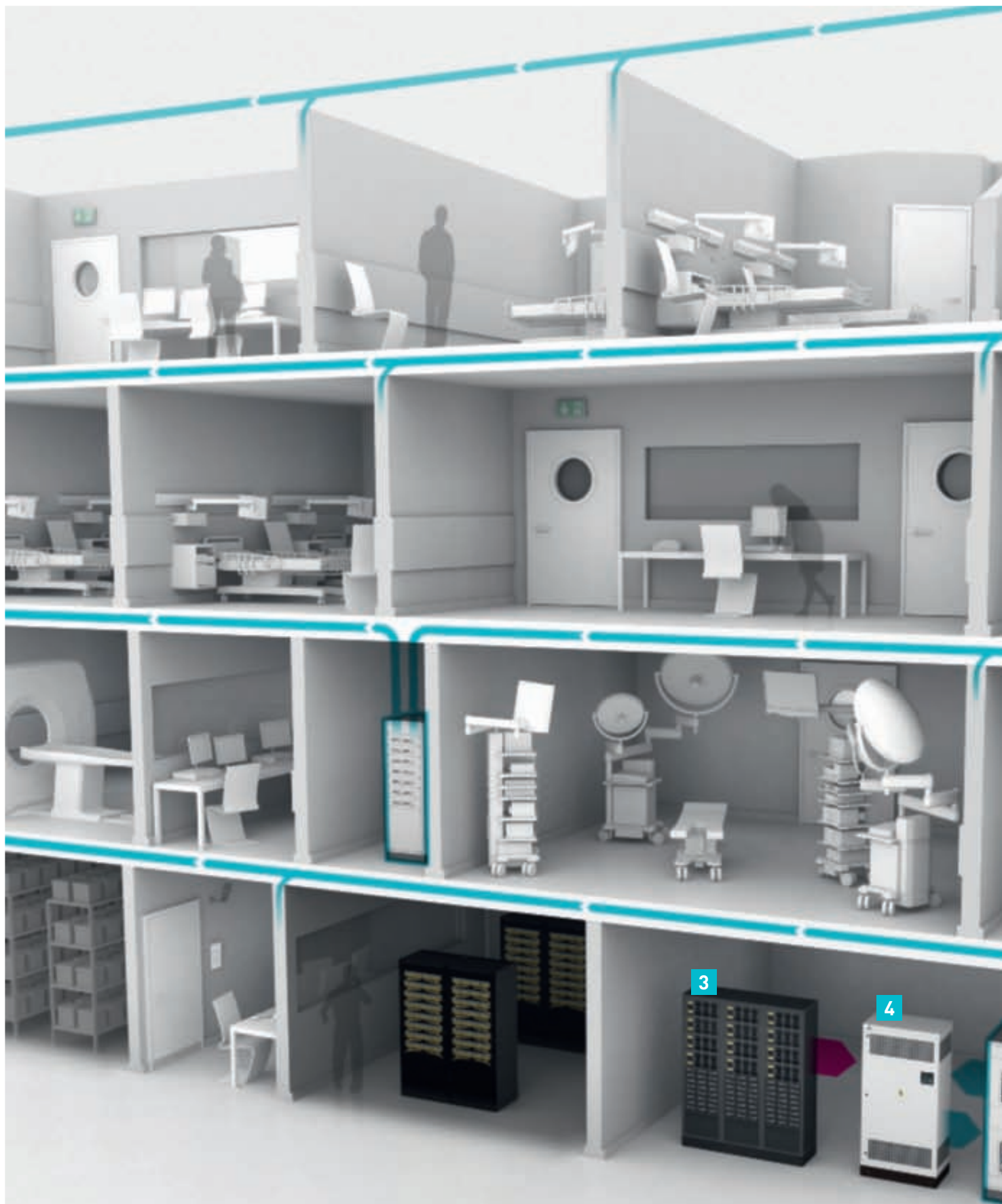
## 5 PREFABRICATED BUSBAR SYSTEMS



HR and SCP busbars

**Prefabricated busbar trunking (PED) is a safe, reliable solution for the distribution of high currents.**

Legrand offers complete distribution systems for high currents of up to 5000 A. Whether for transformer-LV panel connections, power supply to lighting units or server racks, busbar trunking is quick to install and offers great flexibility by enabling reconfigurations without any interruption.



## OPERATING PERFORMANCE

In healthcare facilities, operating performance is the guarantee of continuous service for critical processes and the monitoring of energy savings. Legrand is establishing itself as an essential player in both of these areas.



## 1 MEASUREMENT, ISOLATION AND SUPERVISION

Measurement is used to locate the faults in an electrical installation and monitor consumption status in real time. Continuity of service is optimised by isolating faults and facilitating fast intervention. Targeted corrective actions can then reduce energy consumption.

Measuring units provide a response for the continuous monitoring of isolation for critical Group 2 areas and contribute to the reduction of failure risk. Legrand energy meters are used to monitor the energy savings. Possibility of supervision via PC or measuring unit.



Insulation Monitoring Device enclosure



Door-mounted measuring unit



Legrand supervision software

## 2 POWER CIRCUIT BREAKERS

Ensuring the safety of people and goods and continuity of service.

The Legrand DX<sup>3</sup>, DPX<sup>3</sup>, and DMX<sup>3</sup> circuit breaker ranges cover all breaking capacities and currents up to 6300 A. By guaranteeing the very highest performance levels, they facilitate operation and maintenance, as well as installation upgrades. DMX<sup>3</sup> air circuit breakers with integrated measurement control provide a genuine response to requirements in terms of safety and energy control.



Power enclosure



DMX<sup>3</sup>, DPX<sup>3</sup> and DX<sup>3</sup>

## 3 UPS (UNINTERRUPTIBLE POWER SUPPLY)



Modular or traditional UPS enclosures

Whether modular or traditional, a correctly sized and highly efficient UPS is essential.

The UPS product offerings help to reduce electricity consumption. They also improve overall installation efficiency, reaching 99% in ECO mode and 95% in Online mode.

## 4 ENERGY QUALITY



Capacitor bank

Reactive energy compensation systems to boost the performance of the electrical installation.

The capacitor banks compensate for the reactive energy of your electrical installation, thereby enabling energy bills to be reduced.

## 5 DRY-TYPE TRANSFORMERS



Zucchini transformers

Good short-circuit resistance and reduced maintenance costs.

Legrand HV/LV transformers (up to 17,000 kVA) can reduce electricity consumption by up to 20% during off-peak activity phases in healthcare facilities. Compact and easy to use, they offer good resistance to short circuits and they reduce maintenance costs.

UNINTERRUPTED SERVICE

ENERGY SAVINGS



Everyday support, a specialist design office, extended product guarantees



Showrooms and installed demonstration products all over the world



Training courses and presentations given by professionals

## AT YOUR SERVICE ALL OVER THE WORLD

**Legrand provides guidance and careful supervision for all hospital projects, from the initial idea to completion, as well as during use.**

At each stage of the design, Legrand has a certified network of partners who contribute their technological expertise and the support that is essential for the progress of the project.



Various information media:  
catalogues, technical brochures, websites, etc.



Software for installation sizing  
and the commissioning of products



Certified products: LOVAG – ACAE certification,  
IEC 60439-2 standard



**Headquarters**

128, avenue de Lattre de Tassigny  
87045 Limoges Cedex

France

Tel. : + 33 (0) 5 55 06 87 87

Fax: + 33 (0) 5 55 06 88 88

[www.legrand.com](http://www.legrand.com)