

DLP-S & WIRING DEVICES

THE MAXIMUM
FREEDOM OF CHOICE



CATALOGUE
PAGES
INSIDE
→

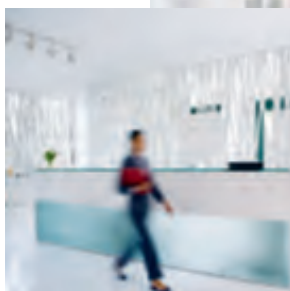
SNAP-ON AND UNIVERSAL TRUNKING
FOR HIGH AND LOW CURRENT DISTRIBUTION

THE **GLOBAL SPECIALIST**
IN ELECTRICAL AND DIGITAL BUILDING INFRASTRUCTURES

 **legrand**[®]

Be free to choose your solution

The new DLP-S snap-on and universal trunking fits in perfectly in all building sectors, for both new and refurbishment work and guarantees the integration of multiple ranges of wiring devices.



ECO-FRIENDLY

Products designed with the environment in mind

Legrand is committed to provide high-quality products which are suitable for all your requirements:

- Choice of 100% recyclable materials (PVC)
- Increased requirement: products conform to the RoHS 2 Directive limiting the use of certain harmful substances (lead, mercury, cadmium, hexavalent chromium, PBB and PBDE)
- Recyclable packaging is prioritised
- Selection of our suppliers in accordance with the REACH regulations

Our production sites are ISO 9001 and ISO 14001 certified



The flexibility before anything

Legrand offers several dimensions of DLP-S snap-on or universal trunking in order to satisfy all installation requirements and to maximize compatibility with the different wiring device ranges, from Mosaic to Niloé or Kaptika.

SNAP-ON TRUNKING: THE NATURAL CHOICE WITH MOSAIC WIRING ACCESSORIES



Mosaic mechanisms are simply clipped on the trunking body

UNIVERSAL TRUNKING: TRADITIONAL INSTALLATION METHOD WITH MODULAR OR UNIVERSAL SUPPORTS

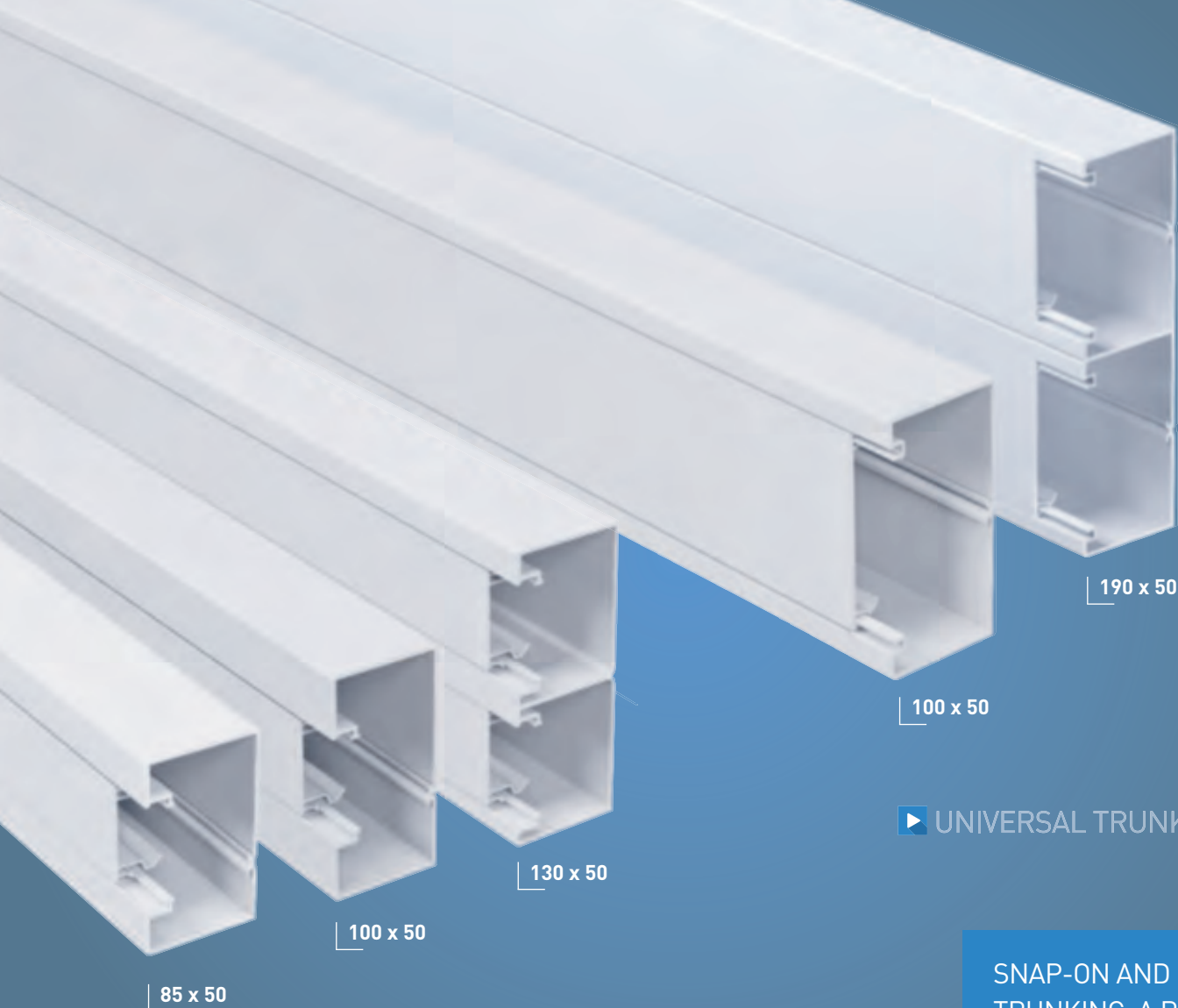


Mosaic mechanisms are integrated via modular supports available from 2 to 6 modules.



60 mm fixing centre wiring devices like Niloé or Kaptika are installed with the help of the universal support.





85 x 50

▶ SNAP-ON TRUNKING

100 x 50

130 x 50

100 x 50

▶ UNIVERSAL TRUNKING

190 x 50

SNAP-ON AND UNIVERSAL TRUNKING, A RANGE SUITABLE FOR MOST OF THE APPLICATIONS

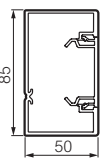
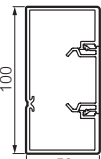
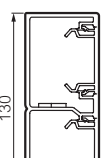

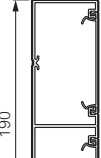
An optimised range

suitable for the requirements of any building

Body + cover + partition*
= 1 Single catalogue number

- 1 single catalogue number per trunking size
- Suitable high and low current applications
- Can be mounted vertically or horizontally

5 sizes of trunking

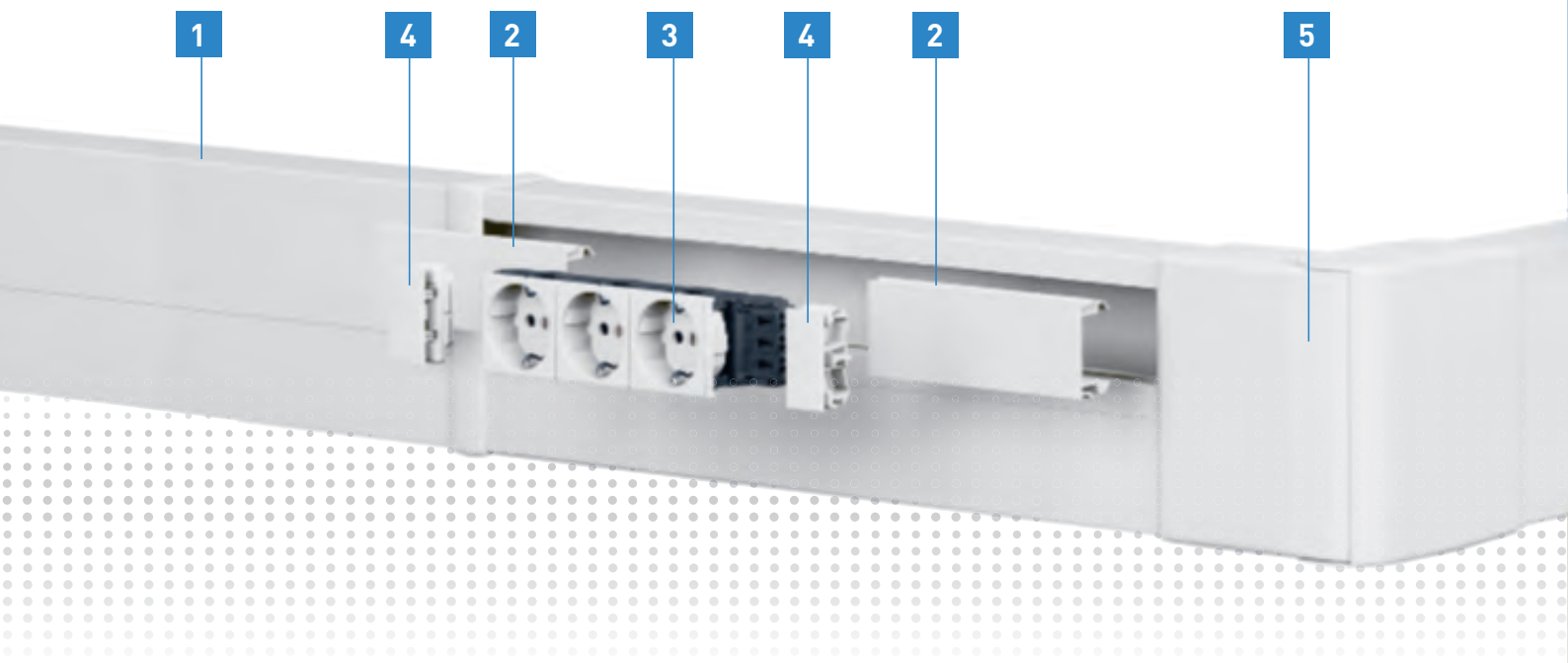
| | | Cat.Nos | Number of compartments | Length | Colour |
|-----------|---|----------|------------------------|--------|--------|
| SNAP-ON |  85 x 50 | 6 380 20 | 1* | 2 m | White |
| |  100 x 50 | 6 380 30 | 1* | 2 m | White |
| |  130 x 50 | 6 380 40 | 2 | 2 m | White |
| UNIVERSAL |  100 x 50 | 6 380 38 | 1* | 2 m | White |
| |  190 x 50 | 6 380 50 | 2 | 2 m | White |

* Possible partition

Snap-on trunking

simple and intuitive installation

- No additional support - simply clip 45 mm Mosaic wiring devices on the trunking body
- Rigid profile with perforations, easy to cut rectangular shape, with protective film during installation
- Self-guiding cover for easy fitting
- Sockets held firmly in the trunking



1 Rigid rectangular profiles with perforations



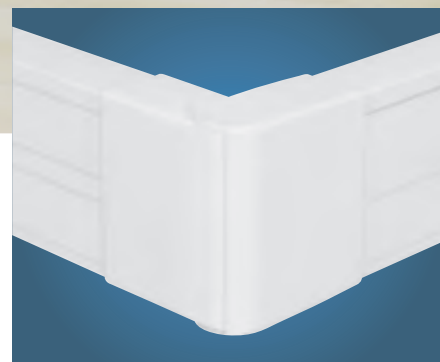
2 Self-guiding cover



3 Clip in the Mosaic socket



4 Fit the Normaclip accessories and 45 mm cover

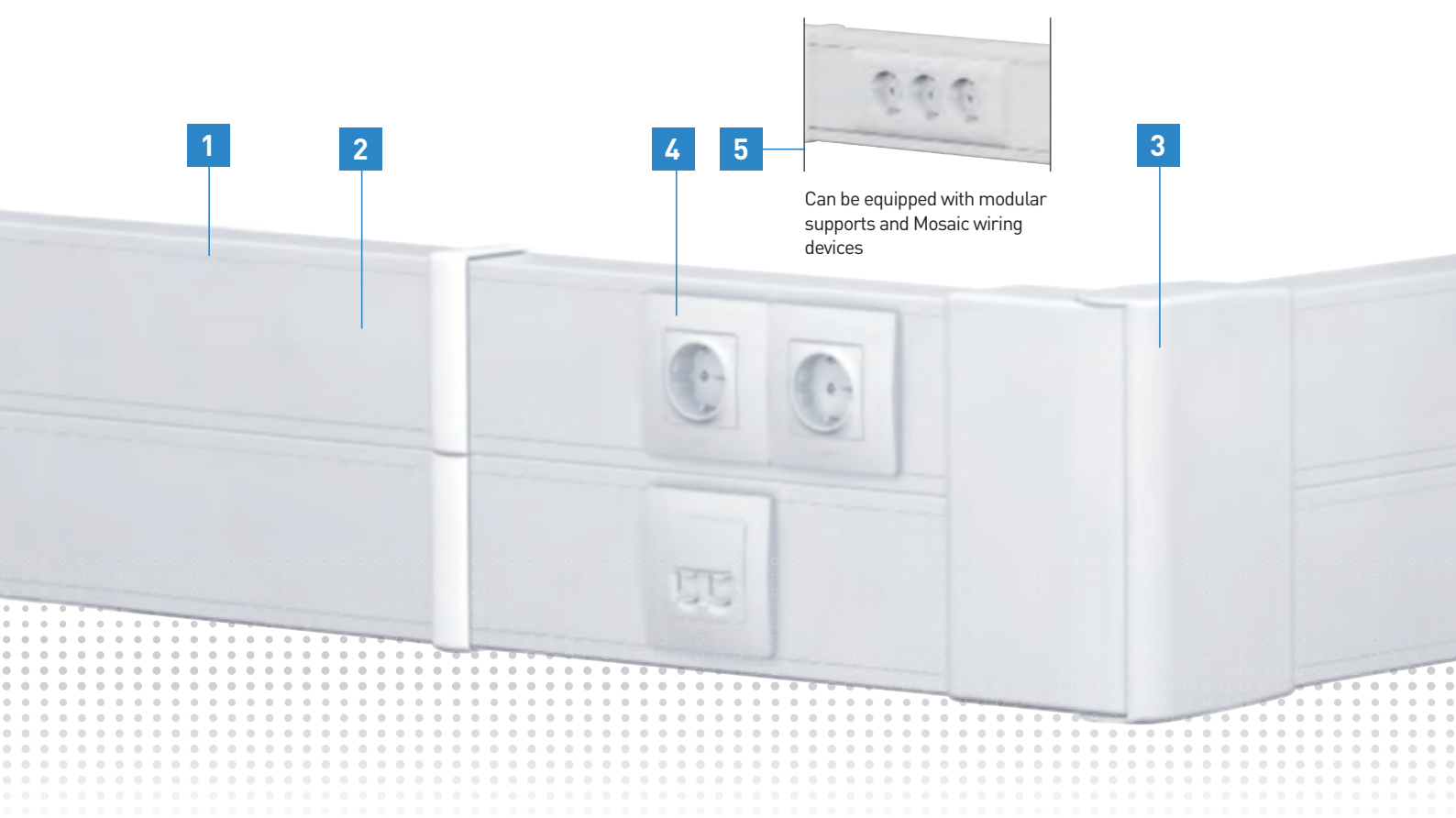


5 Ready to install accessories

Universal trunking

for the essentials

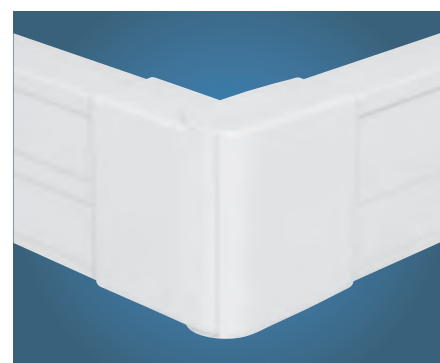
- Traditional installation method with modular or with universal supports
- Compatible with all types of 45 mm mechanism (like Mosaic) or with other 60 mm fixing centre wiring devices (like Niloé or Kaptika)



1 Rigid profiles with perforations



2 Self-guiding cover



3 Really to install accessories



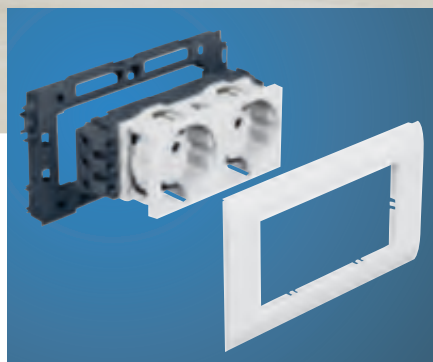
3

3

3



4 Niléo socket and universal support for 60 mm fixing centres wiring devices



5 Mosaic sockets and modular support

Ready to install accessories:

save you time
and provide
a perfect finish

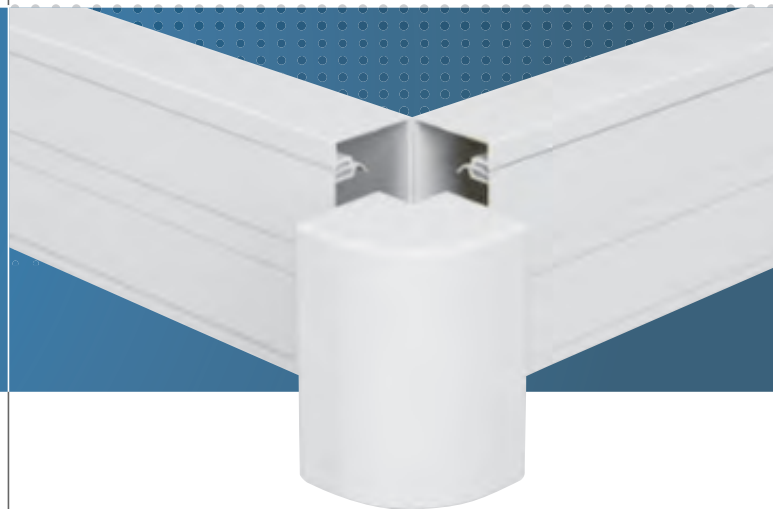
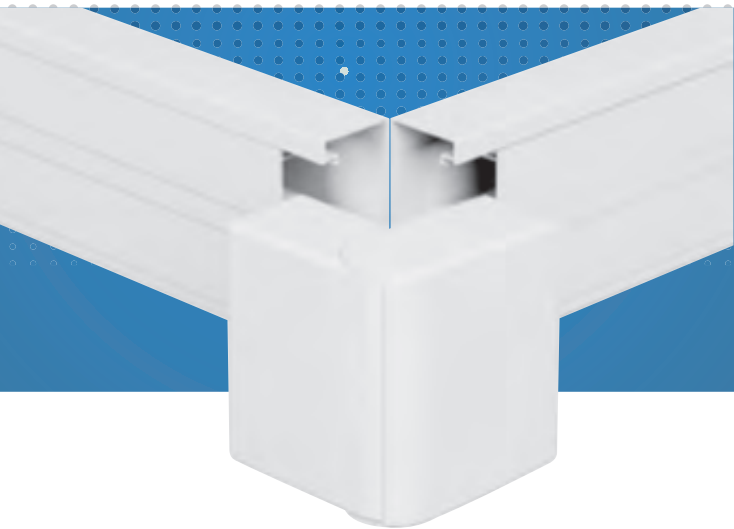
A common range of accessories
for the snap-on and
the universal trunking*

▶ VARIABLE ANGLES

- Adjust easily to all configurations and provide a perfect finish for your cable routing (using the variable angles)
- Quick to install, ready to fit assembly, providing an excellent hold

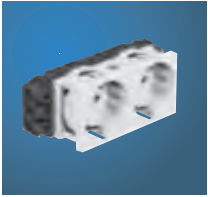
▶ FIXED VERSION ANGLES

The space-saving solution for sites without particular constraints in terms of configuration



▶ INTERNAL ANGLE

▶ EXTERNAL ANGLE



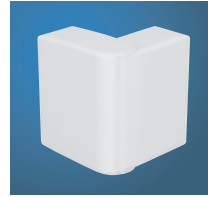
Mosaic wiring accessories



Variable version (from 80° to 120°)



Fixed version (90°)



Variable version (varies from 60° to 120°)



Fixed version (90°)



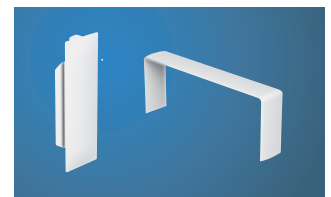
End cap



Flat angle



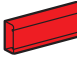
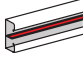
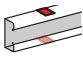
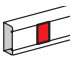
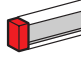


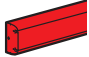
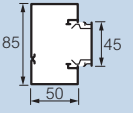
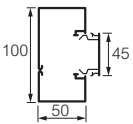
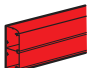
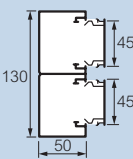
Flat junction



Cover joint and body joint

DLP-S snap-on trunking

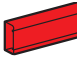
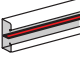
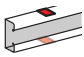
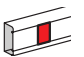
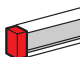




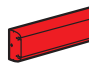
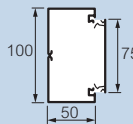
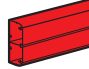
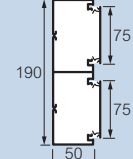
trunking and accessories

| TRUNKING | | | TRUNKING AND ACCESSORIES | | | | | VARIABLE ANGLES | |
|---|---|--------------------|---|---|---|--|---|---|---|
| Number of compartments | Cover width (mm) | Cross-section (mm) | Body + cover | Partition | Body joint | Cover joint | End cap | Internal angle 80° 120° | External angle 60° 120° |
| | | |  |  |  |  |  |  |  |
|  |  | 85 x 50 | 6 380 20 | 6 380 08 | 6 380 26 | 6 380 00 | 6 380 25 | 6 380 21 | 6 380 22 |
| |  | 100 x 50 | 6 380 30 | 6 380 08 | 6 380 36 | 6 380 00 | 6 380 35 | 6 380 31 | 6 380 32 |
|  |  | 130 x 50 | 6 380 40 ⁽¹⁾ | - | 6 380 46 | 2 x 6 380 00 | 6 380 45 | 6 380 41 | 6 380 42 |

1: Partition(s) supplied with body

DLP-S universal trunking

trunking and accessories

| TRUNKING | | | TRUNKING AND ACCESSORIES | | | | | VARIABLE ANGLES | | FIXED ANGLES AT 90° | |
|---|---|--------------------|---|---|---|---|--|---|---|---|---|
| Number of compartments | Cover width (mm) | Cross-section (mm) | Body + cover | Partition | Body joint | Cover joint | End cap | Internal angle 80° 120° | External angle 60° 120° | Internal angle | External angle |
| | | |  |  |  |  |  |  |  |  |  |
|  |  | 100 x 50 | 6 380 38 | 6 380 08 | 6 380 36 | 6 380 01 | 6 380 35 | 6 380 31 | 6 380 32 | 6 380 11 | 6 380 12 |
|  |  | 190 x 50 | 6 380 50 | 6 380 08 | 6 380 56 | 6 380 01 | 6 380 55 | 6 380 51 | 6 380 52 | - | - |

Mosaic socket outlets

| FIXED ANGLES AT 90° | | | JUNCTION |
|---------------------|----------------|------------|---------------|
| Internal angle | External angle | Flat angle | Flat junction |
| | | | |
| 6 380 27 | 6 380 28 | 6 380 29 | 6 380 24 |
| 6 380 17 | 6 380 18 | 6 380 19 | 6 380 34 |
| 6 380 47 | 6 380 48 | 6 380 49 | 6 380 44 |

| MOSAIC SOCKETS OUTLETS - SCREW TERMINALS GERMAN STANDARD | | | | |
|---|--|----------|----------|-------------|
| | | Standard | Red | Tamperproof |
| 2P+E, 2 modules | | 0 776 01 | - | 0 776 21 |
| 2 x 2P+E, 4 modules | | 0 776 02 | 0 776 12 | 0 776 22 |
| 3 x 2P+E, 6 modules | | 0 776 03 | 0 776 13 | 0 776 23 |
| 4 x 2P+E, 8 modules | | 0 776 04 | - | 0 776 24 |
| MOSAIC RJ 45 SOCKETS | | | | |
| Cat. 6 UTP 2 modules | | | 0 786 61 | |
| Cat. 5e UTP 2 modules | | | 0 786 51 | |

Niloé and Kaptika socket outlets

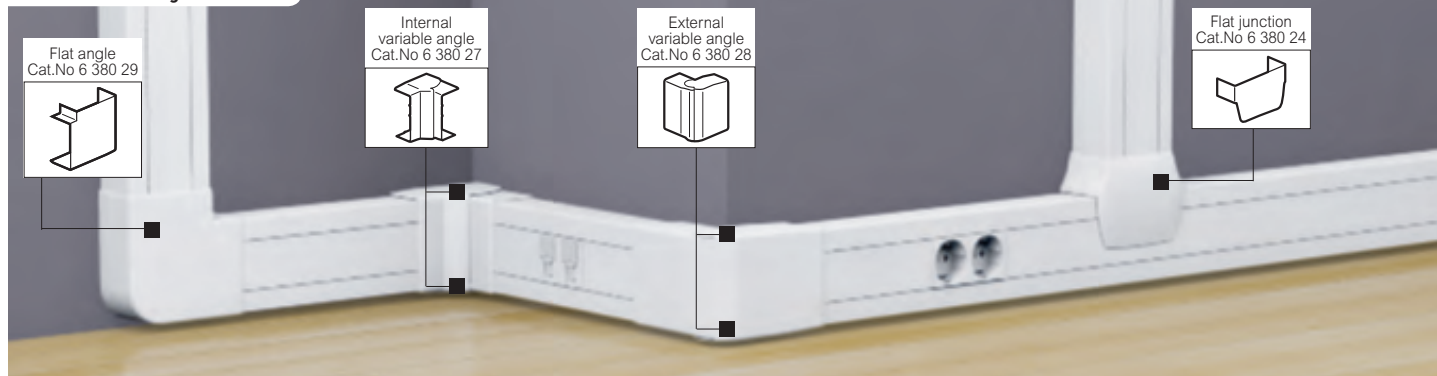
| FIXED ANGLES | JUNCTION | MOUNTING WIRING ACCESSORIES | | | |
|--------------|---------------|-----------------------------|-----------|-----------|-------------------------------------|
| | | For 45 mm mechanisms | | | Universal (60 mm fixing centres) |
| Flat angle | Flat junction | 2 modules | 4 modules | 6 modules | |
| | | | | | |
| 6 380 13 | 6 380 34 | 6 380 02 | 6 380 03 | 6 380 04 | 6 117 88 |
| 6 380 53 | 6 380 54 | 6 380 02 | 6 380 03 | 6 380 04 | 6 117 88 |

| 60 MM FIXING CENTRE SOCKET OUTLETS - SCREW TERMINALS GERMAN STANDARD | | |
|---|---------------------|----------|
| | Niloé | Kaptika |
| White | | |
| 2P+E | 6 645 39 + 6 650 01 | 7 821 11 |
| 2P+E, with safety shutters | 6 645 29 + 6 650 01 | - |
| 60 MM FIXING CENTRES RJ 45 SOCKETS | | |
| | Niloé | Kaptika |
| White | | |
| Cat. 5e UTP | 6 645 71 + 6 650 01 | 7 821 24 |

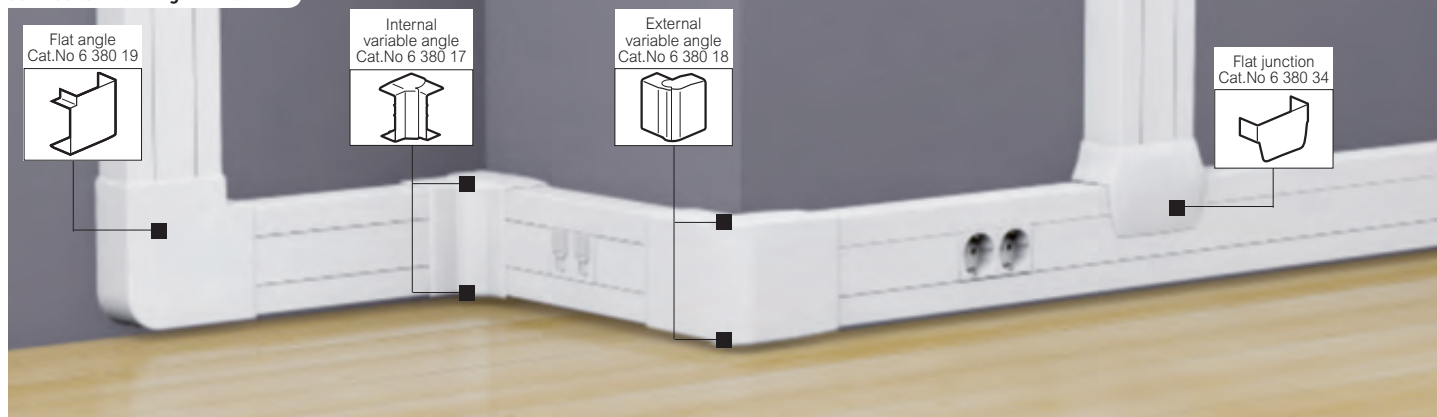
DLP-S snap-on trunking 85 x 50 and 100 x 50

45 mm cover

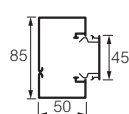


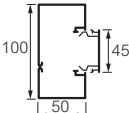





Cat.Nos for trunking 85 x 50



Cat.Nos for trunking 100 x 50



Selection chart (p. 10-11)
 Technical characteristics (p. 16-17)

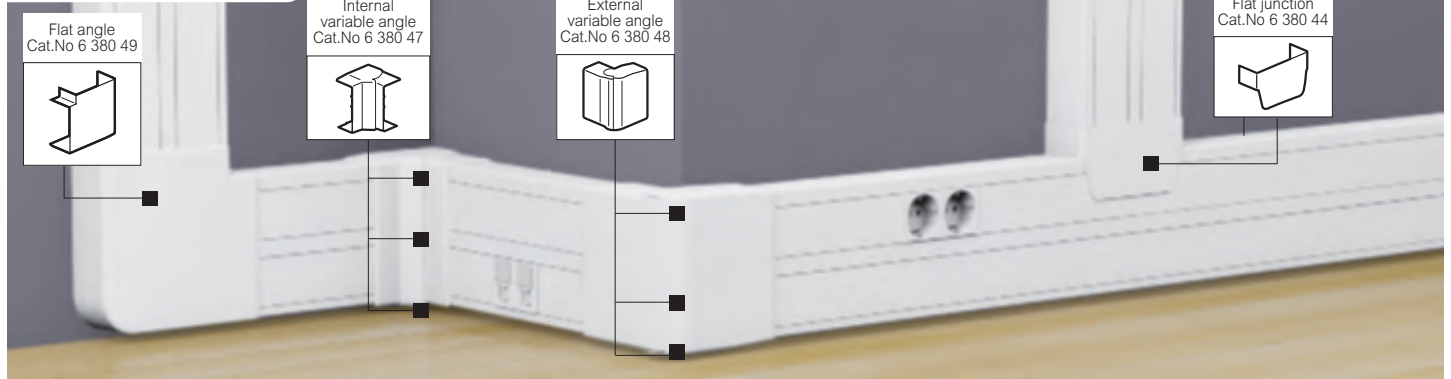
| Pack | Cat.Nos | | Snap-on trunking | Angles |
|------|----------|----------|---|--|
| | 85 x 50 | 100 x 50 | | |
| 20' | 6 380 20 | | 1-compartment trunking Includes: - 1 body - 1 cover width 45 mm Can take 45 mm wiring accessories, such as Arteor or Mosaic Supplied in 10 units of 2 m length  | Variable angles  Internal angle, from 80° to 120°  External angle, from 60° to 120° |
| 16' | | 6 380 30 | | Supplied in 8 units of 2 m length  |
| 32 | 6 380 08 | | Partition  Separation partition Length 2 m | End cap  End cap |
| 10 | 6 380 26 | 6 380 26 | Body joint  For aligning trunking body during installation | Flat junction  Creates a junction between 85 x 50 mm vertical trunking and any other size of the range |
| 10 | 6 380 00 | | Cover joint  Cover joint width 45 mm | |

1: Number of meters in pack

DLP-S snap-on trunking 130 x 50

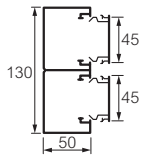
45 mm cover

Cat.Nos for trunking 130 x 50



Selection chart (p. 10-11)
 Technical characteristics (p. 16-17)

| Pack | Cat.Nos | 130 x 50 mm snap-on trunking |
|----------------------------|----------|--|
| 12' | 6 380 40 | 2-compartment trunking Includes: - 1 body - 2 covers width 45 mm Supplied in 6 units of 2 m length Can take 45 mm wiring accessories, such as Arteor or Mosaic |
| 10 | 6 380 46 | Body joint For aligning trunking body during installation |
| 10 | 6 380 00 | Cover joint Cover joint for 45 mm cover |
| Angles | | |
| 10 | 6 380 41 | Variable angles Internal angle from 80° to 120° |
| 10 | 6 380 42 | External angle from 60° to 120° |
| Fixed angles at 90° | | |
| 8 | 6 380 47 | Internal angle |
| 12 | 6 380 48 | External angle |
| 8 | 6 380 49 | Flat angle at 90° |
| 10 | 6 380 45 | End cap End cap |
| 5 | 6 380 44 | Flat junction Creates a junction between 130 x 50 mm vertical trunking and any other size of the range |
| 10 | 6 038 57 | Normaclip accessory For 45 mm wiring devices With anti-pullout and anti-slip system for perfect fitting of the mechanisms on DLP-S trunking. |



| Pack | Cat.Nos | Sockets for snap-on trunking |
|---|----------------------|---|
| Sockets with connection at both sides for snap-on mounting on trunking with 45 mm cover. Particularly suitable for installation on snap-on trunking Connected with screw terminals | | |
| German standard | | |
| 10 | Standard 0 776 01 | 2P+E (2 modules) |
| 10 | Tamperproof 0 776 21 | 2P+E (2 modules) |
| 10 | 0 776 02 | 2 x 2P+E (4 modules) |
| 10 | 0 776 03 | 3 x 2P+E (6 modules) |
| 5 | 0 776 04 | 4 x 2P+E (8 modules) |
| 10 | Red 0 776 12 | 2 x 2P+E (4 modules) |
| 10 | 0 776 13 | 3 x 2P+E (6 modules) |
| RJ 45 sockets | | |
| Certified as conforming to standards ISO 11801 ed.2.0, EN 50173-1 and EIA/TIA 568 Rapid connection sockets, no tool needed Contacts marked with 568 A and B dual colour code and numbers Connectors with self-stripping terminals Possibility of re-wiring in the event of error Multidirectional cable entry Can be installed in all 35 mm deep supports for UTP and FTP connectors, and 50 mm deep for STP connectors | | |
| 10 | 0 786 61 | Cat. 6 UTP UTP - 8 contacts, 2 modules |
| 10 | 0 786 51 | Cat. 5e UTP UTP - 8 contacts, 2 modules |

1: Number of meters in pack

DLP-S universal trunking 100 x 50

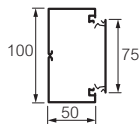
75 mm cover

Cat.Nos for trunking 100 x 50



Selection chart (p. 10-11)
 Technical characteristics (p. 16-17)

| Pack | Cat.Nos | Universal trunking |
|------|----------|--|
| 12' | 6 380 38 | 1-compartment trunking Includes: - 1 body - 1 cover width 75 mm Supplied in 6 units of 2 m length Can take : - 45 mm wiring accessories (Arteor or Mosaic) with 75 mm cover support frames (p. 14) - 60 mm fixing centres wiring devices (Galea Life, Valena, Niloé, Kaptika) with universal support (p. 15) |
| 32' | 6 380 08 | Partition Separation partition Length 2 m |
| 10 | 6 380 36 | Body joint For aligning trunking body during installation |
| 50 | 6 380 01 | Cover joint Cover joint for 75 mm cover |



| Pack | Cat.Nos | End cap |
|------|----------|--|
| 20 | 6 380 35 | End cap |
| 5 | 6 380 34 | Flat junction Creates a junction between 100 x 50 mm vertical trunking and any other size of the range |

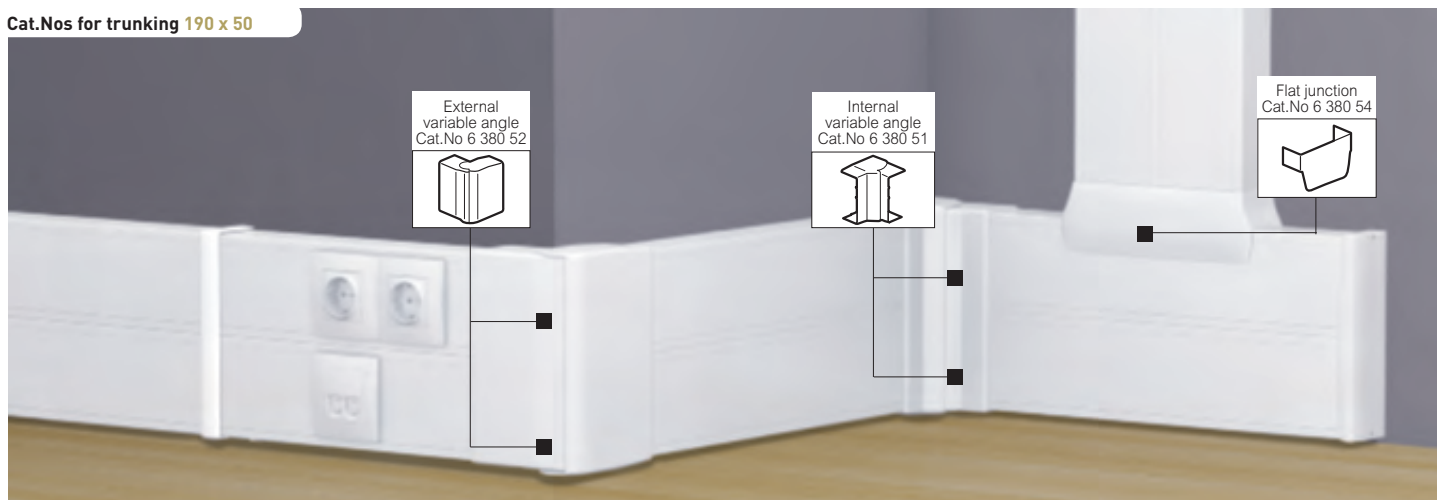
| | | Angles |
|----|----------|--|
| 10 | 6 380 31 | Variable angles Internal angle, from 80° to 120° |
| 10 | 6 380 32 | External angle, from 60° to 120° |
| 20 | 6 380 11 | Fixed angles at 90° Internal angle |
| 20 | 6 380 12 | External angle at 90° |
| 16 | 6 380 13 | Flat angle at 90° |

1: Number of meters in pack

DLP-S universal trunking 190 x 50

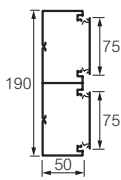
75 mm cover

Cat.Nos for trunking 190 x 50



Selection chart (p. 10-11)
 Technical characteristics (p. 16-17)

| Pack | Cat.Nos | Universal trunking |
|------|----------|--|
| 8' | 6 380 50 | 1-compartment trunking Includes: - 1 body - 1 cover width 75 mm Supplied in 4 units of 2 m length Can take : - 45 mm wiring accessories (Arteor or Mosaic) with 75 mm cover support frames (p. 14) - 60 mm fixing centres wiring devices (Galea Life, Valena, Niloé, Kaptika) with universal support (p. 15) |
| 32' | 6 380 08 | Partition Separation partition Length 2 m |
| 10 | 6 380 56 | Body joint For aligning trunking body during installation |
| 50 | 6 380 01 | Cover joint Cover joint for 75 mm cover |
| 10 | 6 380 51 | Angles Internal angle from 80° to 120° |
| 10 | 6 380 52 | External angle from 60° to 120° |
| 5 | 6 380 53 | Flat angle at 90° |
| 10 | 6 380 55 | End cap End cap |
| 5 | 6 380 54 | Flat junction Creates a junction between 100 x 50 mm vertical trunking and any other size of the range |



1: Number of meters in pack

| Pack | Cat.Nos | Supports for 45 mm wiring devices |
|------|----------|---|
| 10 | 6 380 02 | For mounting Mosaic wiring accessories Clip-on supports, which can be fitted side by side Supplied with white finishing plate For cover 75 mm width For 2 modules |
| 5 | 6 380 03 | For 4 modules |
| 5 | 6 380 04 | For 6 modules |
| 5 | 6 117 88 | Universal support For 60 mm fixing centres wiring devices such as Niloé, Kaptika or Mosaic Programme (equipped with support frame and plate) For cover 75 mm width |
| 20 | 6 645 39 | German standard socket outlets Screw terminals Niloé - white To be equipped with 1-gang plate Cat.No 6 650 01 2P+E |
| 20 | 6 645 29 | 2P+E with safety shutters |
| 20 | 7 821 11 | Kaptika - white 2P+E |
| 20 | 6 645 71 | Data sockets Niloé - white To be equipped with 1-gang plate Cat.No 6 650 01 RJ 45 Cat. 5e UTP |
| 20 | 7 821 24 | Kaptika - white RJ 45 Cat. 5e UTP Supplied with a tool |

DLP-S snap-on and universal trunking

Technical characteristics

- Resistance to impact for installation and application: 2.0J
- Minimum storage and transport temperature: - 25 °C
- Minimum installation and usage temperature: - 5 °C
- Maximum application temperature: + 60 °C
- Resistance to flame propagation: Non-flame propagating
- Without electrical continuity characteristic
- With electrical insulating characteristic
- Degrees of protection: IP 40
- Rated current: 500 V
- Against mechanical shocks: IK 07

Wiring capacity

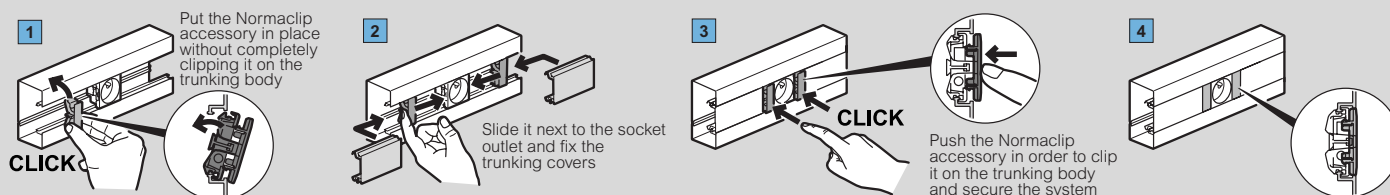
Snap-on trunking

| Dimensions | Cross-section per comp. (mm ²) | Capacity | Max. number of conductors (of the same type) | | | Cable Ø max. (mm) | |
|--|--|----------|--|-------------------------|-----------------------|-------------------|----|
| | | | 3 x 1.5 mm ² | 3 x 2.5 mm ² | UTP & FTP cat. 6 (mm) | | |
| 85 x 50 Cat.No 6 380 20 | 1 | 2940 | Max. | 26 | 19 | 58 | 36 |
| | | 2092 | With 2P+E socket | 18 | 13 | 41 | |
| | | 2618 | With RJ 45 socket | 23 | 17 | 52 | |
| 100 x 50 Cat.No 6 380 30 | 1 | 4146 | Max. | 36 | 27 | 82 | 36 |
| | | 2738 | With 2P+E socket | 24 | 17 | 54 | |
| | | 3264 | With RJ 45 socket | 29 | 21 | 65 | |
| 130 x 50 Cat.No 6 380 40 | 1 | 2646 | Max. | 23 | 17 | 52 | 36 |
| | | 1256 | With 2P+E socket | 11 | 8 | 25 | |
| | | 1762 | With RJ 45 socket | 15 | 11 | 35 | |
| | 2 | 2616 | Max. | 23 | 17 | 52 | |
| | | 1206 | With 2P+E socket | 10 | 7 | 24 | |
| | | 1732 | With RJ 45 socket | 15 | 11 | 34 | |

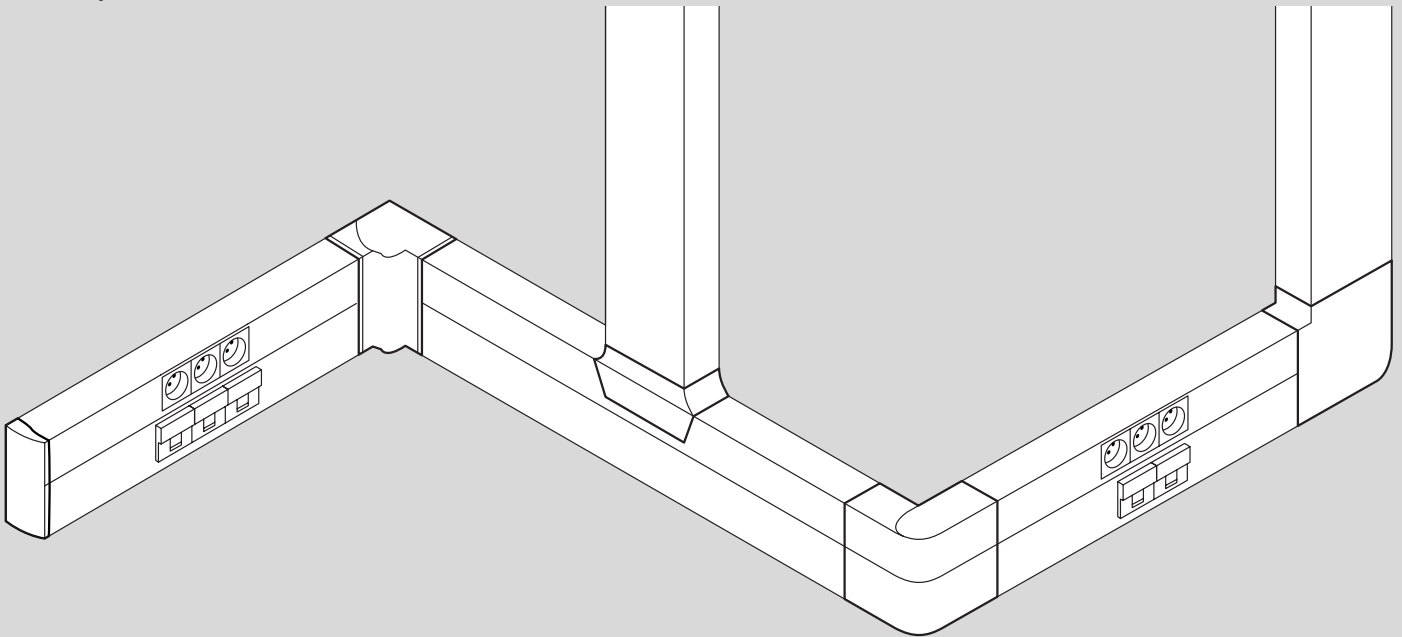
Universal trunking

| Dimensions | Cross-section per comp. (mm ²) | Capacity | Max. number of conductors (of the same type) | | | Cable Ø max. (mm) | |
|--|--|----------|--|-------------------------|-----------------------|-------------------|----|
| | | | 3 x 1.5 mm ² | 3 x 2.5 mm ² | UTP & FTP cat. 6 (mm) | | |
| 100 x 50 Cat.No 6 380 38 | 1 | 4224 | Max. | 47 | 33 | 172 | 40 |
| 190 x 50 Cat.No 6 380 50 | 1 | 4017 | Max. | 45 | 29 | 164 | 40 |
| | 2 | | | | | | |

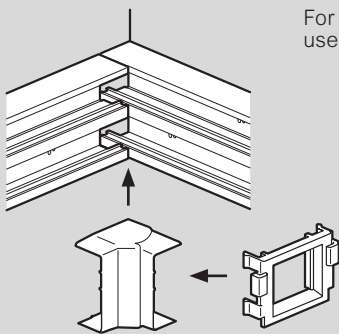
Installation principle for Normaclip accessory



■ Example of installation

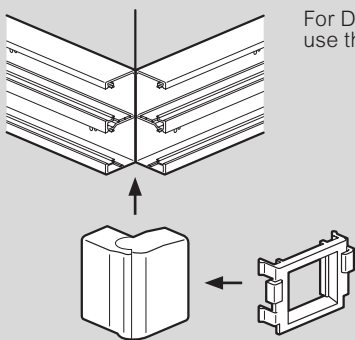


Internal angle



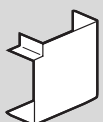
For DLP-S 100 x 50 universal trunking use the special adaptor

External angle



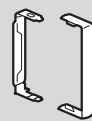
For DLP-S 100 x 50 universal trunking use the special adaptor

Flat angle



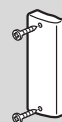
1. Install the base of the flat angle and the two sections of trunking
2. Clip-on the cover of the flat angle
Take care of having a minimum distance between the trunking and the adjacent wall, in order to allow the installation of the angle

Body joint



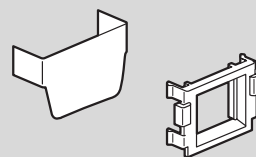
1. Install the body joint support (between two sections of trunking)
2. Clip-on the body joint cover

End cap



For a perfect finish and a better shock resistance block the end cap with the two fixing screws (provided)

Flat junction




For DLP-S 100 x 50 universal trunking use the special adaptor

The flat junction can be used for any size of DLP-S trunking, in horizontal position



FOLLOW US ALSO ON

@ www.legrand.com

 www.youtube.com/legrand

 twitter.com/legrand_news

EXB14020 - July 2014 - Photos: Getty - Thinkstock



Head office

128, av. du Maréchal-de-Lattre-de-Tassigny
87045 Limoges Cedex - France

☎ : + 33 5 55 06 87 87

Fax : + 33 5 55 06 74 55